



**TR-SYSTEMS**  
**notion.S – Comfort Panel**  
**Datasheet 2025**





# notion.S – Comfort Panel

functionally comparable HMI Comfort Panel

TP1500 / TP1900 / TP2000



© Siemens, WinCC, SIMATIC and TIA are registered trademarks of Siemens AG, Munich

[www.trsystems.eu](http://www.trsystems.eu)

---

### Copyrights terms/sources:

© Siemens, WinCC, SIMATIC and TIA Portal are registered trademarks of Siemens AG, Munich

© Microsoft Corporation. All rights reserved. Microsoft, Windows and the Windows logo are trademarks of Microsoft Corporation, registered in the United States and other countries.

### HMI

HMI stands for Human Machine Interface and refers to a dashboard that allows users to communicate with machines, computer programs or systems. From a technical point of view, the term HMI describes any screen that is used to communicate with a device.

### Microsoft Windows 11 IoT Enterprise LTSC

<https://learn.microsoft.com/en-us/windows/iot/iot-enterprise/Overview>

### SIMATIC WinCC Runtime Advanced

[https://support.industry.siemens.com/cs/document/109793105/simatic-wincc-v17-runtime-\(tia-portal\)?dti=0&lc=de-DE](https://support.industry.siemens.com/cs/document/109793105/simatic-wincc-v17-runtime-(tia-portal)?dti=0&lc=de-DE)

### SIMATIC WinCC Unified - Web-Client

<https://support.industry.siemens.com/forum/de/de/posts/simatic-wincc-unified-optionen-web-client/286987>

Series	TRsystems Article no.	Comparable SIEMENS Article No.
notion.S - Comfort Panel TP1500 15,4 inch (1.280 x 800) 0... 50 °C		6AV2124-0QC02-0AX1 6AV2124-0QC02-0AX2
notion.S - Comfort Panel TP1500 <b>fullHD</b> 15,6 inch (1.920 x 1080) -20... 50 °C		
notion.S - Comfort Panel TP1900 18,5 inch (1.366 x 768) 0... 45 °C		6AV2124-0UC02-0AX1
notion.S - Comfort Panel TP1900 <b>fullHD</b> 18,5 inch (1.920 x 1080) 0...50 °C		
notion.S - Comfort Panel TP2200 21,5 inch (1.920 x 1.080) 0... 45 °C		6AV2124-0XC02-0AX1

Accessories	TRsystems Article no.	Comparable SIEMENS Article No.
notion.S Mounting clips (set = 20 pcs.)	778-90247	6AV6671-8XX00-0AX3
notion.S 15,x protective film	778-90209	
notion.S 18,5 protective film	778-90208	
notion.S 21,5 protective film	778-90073	
notion.S 15,x protective film anti-glare	778-90240	
notion.S 18,5 protective film anti-glare	778-90248	
notion.S 21,5 protective film anti-glare	778-90242	
storage medium CFast 120 GByte	778-91885	
storage medium CFast 240 GByte	778-91884	
storage medium CFast 480 GByte	778-91883	
Adapter IBH Link S7++	778-91882	
Adapter IBH Link S5++	778-91881	



## System configuration:

### Initial start-up of the devices:

When you turn it on for the first time, you can select your desired HMI application: “SIMATIC WinCC Runtime Advanced” or “SIMATIC WinCC Unified - Web Client” or just the operating system “Microsoft Windows 11 IoT Enterprise LTSC”.

Among other things, you determine during the system boot process which operating system and which HMI will be booted the next time the device is switched on. It is possible to change the HMI to one and the same “notion.S Comfort Panel” for any switch-on process without incurring any further costs.

### Your benefit:

This means that the “notion.S Comfort Panel” is already prepared for your future HMI requirements! You can decide at any time whether you want to continue operating your systems with the existing HMI largely unchanged, or whether you want to switch to a successor HMI at a later date!

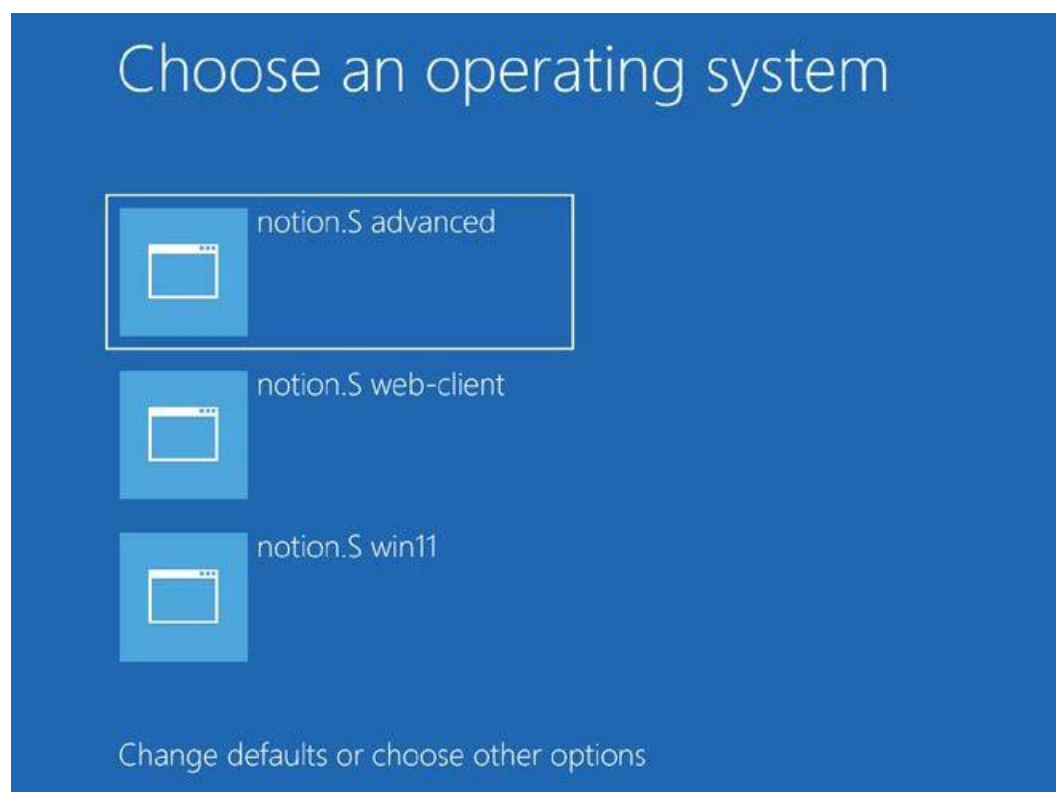


Figure 1: Selection from the system boot process

## SIMATIC WinCC Runtime Advanced

The notion.S – Comfort Panels are projected with the TIA portal. Typically, you use a “PC system” as the HMI device with the necessary settings.

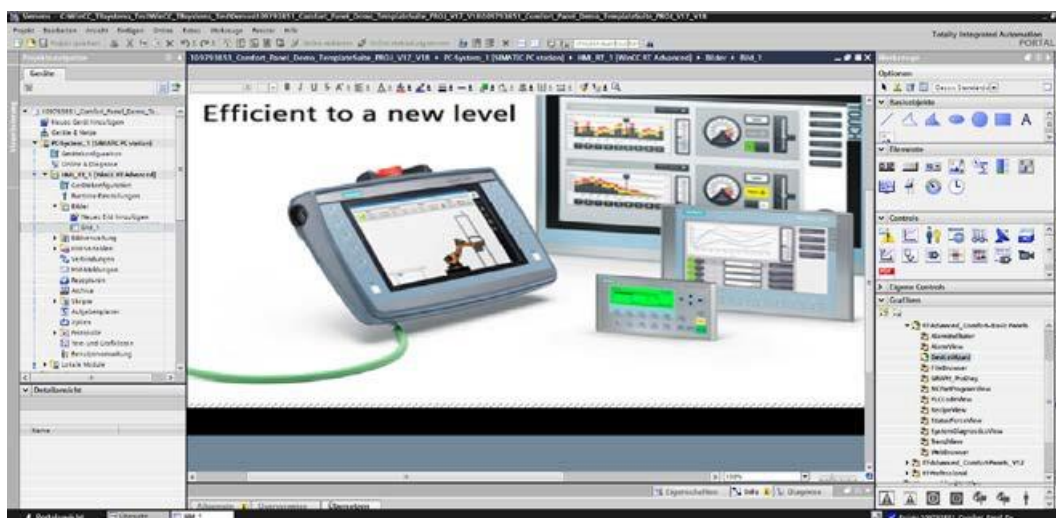


Figure 2: Configuring SIMATIC WinCC HMI Advanced in the TIA Portal

## SIMATIC WinCC Unified - Web-Client

After switching on, the operating system browser of the notion.S – Comfort Panel connects directly to the website of the “WinCC-HMI Unified-Server”. Only the IP addresses for “WinCC- HMI Unified-Server” and “WinCC- HMI Unified-Client” have to be customized.

